



Office of the Monroe County Surveyor
Trohn Enright-Randolph

Health Services Building
119 West 7th Street
Bloomington, IN 47404
Phone: (812) 349-2570

Dear User,

The following images were obtained in 2017 by the Office of the Monroe County Surveyor from the State Imaging and Microfilm Laboratory at the Indiana State Archives. The field notes and plats for Lawrence County are stored on microfilm Reel 1903 at the Indiana State Archives. Each page provided by the State Imaging and Microfilm Laboratory is approximately 18MB. Our office combined the pages by Township & Range and reduced the resulting pdfs. This process may have caused some degradation in quality. We will provide unreduced images of specific pages if required. Please contact us at 812-349-2570 or at SurveyorsOffice@co.monroe.in.us to request a higher quality image of any specific page.

The pdfs are bookmarked with the original page numbers as assigned by the State Imaging and Microfilm Laboratory.

Be prepared to provide the county name, reel number, and the required page numbers when requesting full sized images.

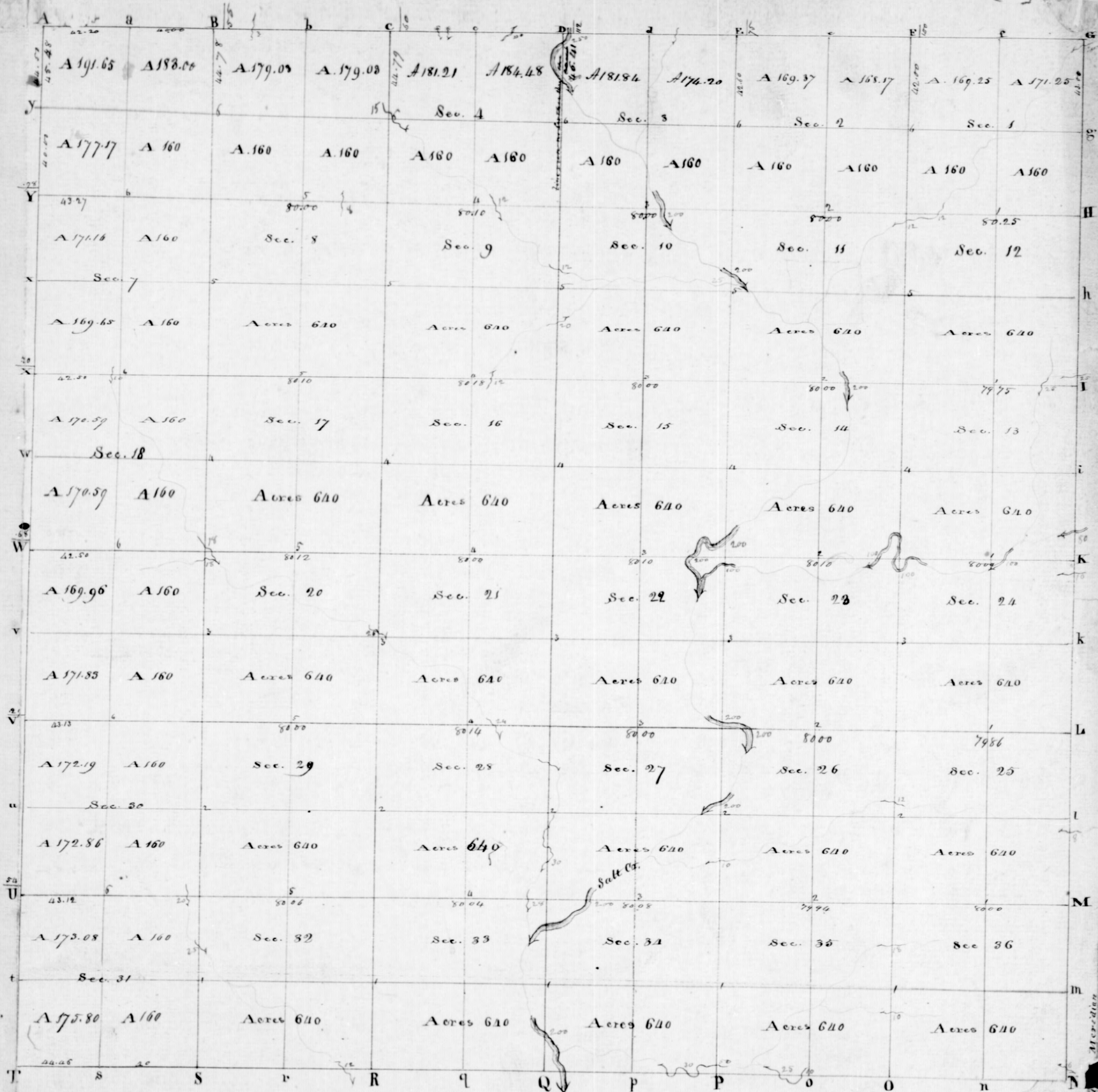
If you would like a DVD of an entire county, please provide us with one DVD per county along with a self-addressed, stamped envelope.

A handwritten signature in black ink, appearing to read "Trohn Enright-Randolph", with a long horizontal flourish extending to the right.

Trohn Enright-Randolph
Monroe County Surveyor

T6N

R1W



Township N^o VI *North of the Base line,* **Range N^o I** *West of the 2nd Meridian.* Surveyed by Arthur Henrie, 1815.

Description of the on the interior Sectional lines.

J. C. N. D. 1. W. 2. M
Campus

J. C. N. D. 1. W. 2. M

161 M 9608

~~South Between 35436~~
~~Brook 5 M 17~~
~~Brook 2 6 200 3~~
~~Set hay mile~~
~~port from a~~

33.00 ~~Brook 10 M~~
40.00 Set hay mile port
from a Logwood
6 564 M 15 M Brook 10
5873 M 21 M

49.50 Poplar 29 2nd Decm.
61.70 Brook 18 M with
80.00 Set port corner
of 4 — 35, 36 25 124
Brook 18 M with
Brook Poplar 29

2)

R.M. Iron

East Between 25836
on random
4000 Set from highway port
8000 In lower third of
line 30 lbs south
of line corner
Land the same

West Between 36525

on true line
4000 Set post at aver-
age distance on
true line for the
corner from a
Sugor 6 S 70 M 16
Do S 40 M 21

8000 In corner

R.M. Iron

(8)

North Between 25826
4000 Set from mile post
from a ~~tree~~
~~4000 Set from~~
~~25826~~
from wood 6 S 838
M 22 the Bush 20
S 21 E 24 the

5950 Brook 12 lbs
wide course
S, M

8000 Set post corner
of a 23 24 25 26
from a Dogwood
4 M 43 E 15 Bush
10 S 17 E 20
Land Nolen Iron
the same

4)

B M 96 W

East Between 24825 on
random

4000 Set temporary post

79.86 Intersection of

line 48 M south

of S corner

Land the same

West Between Sec 24 & 25

on true line

39.93 Set post at average

distance on true

line for S corner

from a Bush 22

579 B 22. To 24

74 M 18 M

79.26 In corner

5)

B M 96 W

North Between 23 & 24

4000 Set hay mill

post from air

horn wood 10

108 10 To 25 M

7 M

7300 Brook 100 M

8000 Set post corner

of Sec 23 24 13 & 14

horn on line

40 525 M 27 Huron

12 M 86 32 M

Land the same

(6.)

B 4 M 5 p M

Bark between 13924

on random

3,500 Bush 200 lbs 8 M

10,000 Same 8 M

4000 Set temporary post

4300 Same 8 M

8000 Spilanthus 8 M

line 12 lbs north

of the corner and same

Post Between 13924

on true line.

4400 Set post at aver

age distance

on true line

for 2 in corner

from on Elm

4000 54650

B. Elder 10 to 29 M 30

8000 In over

(7.)

B 1 M 5 p M

North Between 13914

8,500 Bush 100 lbs 8 M

4000 Set hay mill

post from 0

B. Oak 2400 108

25 Bush 6080

M 9 lbs

8000 Set post corner

of the 11.12 13914

from a B. Walnut

2000 8 M 18 lbs

Elm 8 to 66 M 19 lbs

Same

Same

Same

8)

P.M. 16 V

East Between 12 & 13

on random

40,000 Set limpouhast

65,000 Brook 25 lbs S, M

79,75 Set luteus to 100

line 40 lbs depth
of the corner land
the sameWest Between 12 & 13 on
true line

39,875 Set post at average

distance on true

line for your

corner from a

bank 12 in 80639

Do Do 83667 lbs

7975 in random

9

P.M. 16 V

North Between 11 & 12 -

40,000 Set hay mile post

from a bank 12

N 33 M 22 lbs Do 10

5548 17 links

73,50 Brook 12 lbs M

80,000 Set post corner

of the 11, 12, 182

from a bank

N 65 M 17 Sugar

2 or 3 M 22 links

Land Hilly

The

Same

10)

Wm. Spoon

Est. Between sd 1912
on random

15,00 on road 12 1/2 hrs South

4000 Set timbering post

40,00
80,25 200 less in the 100
line 55 lbs worth
of the same
the same

Most Between 1912 or
therein

40 12 1/2 ft frost at aver
age distance on
true line for 1/2 in
corner from an
Iron wood p 1/2

14th 11th No Hickory

10 578 M 13 Links

80,25 Section corner

Reim Spier

worth Between 18.2

2450 Bush to In Durn

4000 Set hay miles

part from a sugar

90 890 & 12 lbs powder

2456388 links

82.00 set post on the

North boundary

900 lbs. Weight of a

Лагунадор

3268 Mrs. Burkh

12 53 54 55 56 57 58

Land the same

April 2nd 1814

(12)

B 1 M 96 on

North Between 34 33

5000 1000 0 links M

19,00 Bush 20 Ind Diarr

4000 Set half mile
post from a Bush
to 33 20 lbs Sugar
more 48 378 28 lbs8000 Set post corner
of 34 35 26 27

from a Dogwood

to 37 6 11 Bush 6

or 32 M 14 lbs Land

Nolen Iron Bush

Sugar or ash 5 1/2 M

See

(13)

B 1 M 96 on

East Between 26 335

on road

4000 Set temporary post

79,94 Intersection of
and South line
8 lbs South of an
corner and the
sameWest Between 26 335 on
true line39,97 Set post at an
equal distance on
true line for the
corner from
a Bush 12 36 7 37

Sugar 6 or 29 2 11 1/4

79,94 In two corners

R 1 M 34 on

North Between 2624

27,50 Brook 10 lbs M

4000 Set hay mile post

from a Buck 20

Sp 48 10 lbs Dec 18

or 228 22 lbs -

5450 Brook 200 lbs M

80,000 Set post corner

of an 2627 224

23 from on line

2 yr 228 23 lbs

Lycamony 10

or 18 M 33 lbs

Land Kelly Tenn

The Heron

R 1 M 36 on

East Between 23826 on

random

300 Brook 200 lbs

1500 East side S, E

4000 Set temporary post

80,000 In line with 90

line 12 lbs south

of an corner

Land the same

West Between 23826 on

true line

4000 Set post at average

distances on true

line for post corner

from a Hickory 3

898 106 lbs ~~Brook~~~~Sp 4 M 14~~

80,000 In corner

(16)

B 1 M 3 6 on

North Between 22 & 23
 0,50 Salt creek 200 lbs
 S, E -

4,000 - set hay mill

* Post horn a pig

at 10 & 11 629 Bush
 200 lbs 30 lbs

72,50 Brook 100 lbs 1M

2,000 Set post corner

at 14 15 22 & 23

from a bush 12

or 19 6 10 lbs 30 20

S 10. M 28 lbs

Land the same

* This post 4,000 lbs
 for south by a pin
 across lot

(17)

B 1 M 3 6 on

East Between 14 & 23 on
 random

4,000 Set temporary post

43,40 pond 300 lbs S, E, S, M

5,000 Brook 100 lbs S, M

78,00 Farm worth

30,10 In horn corner

Land hole and
 east

West Between 14 & 23 on

true line

4,005 Set post at average

distance on true

line for 1/4 in corner

from a bush 10 S

75 M 10 30 10 10 64

20 lbs

30,10 In corner

(18)

BIM Sp U

Worth
550
4000

Between 14 & 15
Brook 200 lbs M
Set half mile

West from

Brook 100 yds

M 20 208 M

15 M 13 high

6050
8000

Wm 18 & 20

Set post corner

of line 14 15 10 & 11

from a Brook

24 379 M 31 lbs

Do 12 370 & 27

land level line
and wet line Brook
ash maple

(19)

BIM Sp U

Worth Between 11 & 14 on
random

4000 Set lamp post

5450 Brook 200 lbs M

8000 In line to 10 & 11

12 M South of line corner

Land the same

Worth Between 11 & 14 on

line corner

4000 Set first at average

distance on true

line for post corner

from a Brook 18

Set 5 M 39 M plan
10 or 49 & 10

(20)

B. M. J. 6 or

North Between 10 8 99

40,000 Set bay and po
from a Bunch of
20 30 12 32 48 11

44,500 Branch 25 lbs E

52,000 Branch 200 lbs

8,000 Set post corner
of an 10, 11, 28 3 from
a sugar b. 57 9 M 11
Bunch b. 55 5 8 48 lbsLand live and
with Iron
Bunch de

(21)

B. M. J. 6 or

Cost Between 25 11 or
20 00 00

40,000 Set temporary post

80,000 In the middle of
line 12 lbs North
of the corner land
Hilly Iron Bunch
Oak & Hickory

Mark Between 25 11 or

Line line

40,000 Set post at average
distance on line
line for you
as in from aBunch 12 lbs 51 M
17 30 30 32 8 22

80,000 In 20 00

(22)

B1M56 v

North. Between 283

40,000 Set hay mien

post from a

Sweet gum 12

or 25 m 34 lbs

Buck 6 Ins 8

Bears 8308 21 lbs

82,60

Set post on the

North boundary

75 lbs. Mule of st

corner from a

Buck 121348 14

So. 6262 m 15 links

Land the same

April 3rd - 1814

(23)

B1M56 v

North. Between 33934

2000 Brook 200 lbs 18

40,000 On an affact to

~~corner the west~~

2000 Set post corner

of 33,34 27928

from a Hickory 18

or 628 18 lbs

Iron wood 3 136

212 links Land

with Lim

Buck 1818

Gum Oak 8

Hickory

(24)

B 1 M 36 W

East. Between 278834
on road

14,00 Brook 20th S

4,000 Set temporary post

5,250 Brook 10th South

8,008 Intersected by
South line at

Section corner

Large hilly farm

Brook oak & Hickory

West Between 27834

4,004 Set post at aver-
age distance for
 $\frac{1}{4}$ a corner from

a Walnut 12 or 80 & 35

Iron wood 3438

2,000 In corner

B 1 M 36 W (25)

North Between 27828

24,00 Brook 30th S, M

28,00 Same S, E

39,00 Same S, M

65,00 Same S, E

49,00 Set half mile

post from

Hickory 12 or

32 or 10 S, E, M, W, S

8,000 Set post corner

of Aug 27, 28, 2142

from a Sugar

10 or 9 & 30th M, E, S

20 or 23 & 14th

Land the farm

(26)

B1M56 48

East Between 22827 on
random

4000 Set temporary post

8000 Intersected 48 & 5

line at S. corner

corner Land Hilly

Tenn. Beech Poplar

He

West Between S. corner

22827

4000 Set half mile

post from a line

24 or 74610 Sugar

8257 M 13 lbs.

8000 Section corner

(27)

B1M56 48

West Between 21922
Section

4000 Set half mile

post from a

Map 24 & 67 M

92 lbs Sugar 10

M 20 68

8000 Set post corner

ap. 15 16 21 & 22

from a line

8878 M 29 lbs. Beech

13 or 60 M 4 lbs

Land. Nolan and

Rich Tenn

Poplar oak He

B.M. 16 W

East Between 15 & 22 on
random

4000 Set temporary post

65,00 Brook 2000s S.W.

80,10 Intersection of S line
at S corner and
the same

West Between 15 & 22.

40,05 Set post at aver-
age distance for
each corner from a

M 1000 12 S 70° 63'

E 1200 27 N 20

80,10 Section corner

B.M. 16 W

North Between 15 & 16

4000 Set high water

post from a

B.M. 1000 12

S 47° 14' S 100

E 20° 10' S

2000 Set post corner

at line 15, 16 9 & 10

from a B.M.

S 22° 10' S 14

W 45° 10' S

Land the same

Pl M 36 or

East Between 10 & 15 am
random
4000 Set temporary post
8000 Intersected with line
12 hrs north of
corner land the
same

West Between 10 & 15 or
true line
4000 Set post at aver-
age distance on
true line for your
corner from and
from road 644
to 17 Red line 6
34380 lbs

2000 Set corner corner

Pl M 36 or

North Between 9 & 10
2500 Branch 26 lbs East
4000 Set true mile
post from a bench
20 or 17 M 8 20 10
3808 15 lbs

5850 Branch 12 lbs 12
3000 Set post corner
of line 9 10 394
from a Daywood
154062 Bench
10 or 17 M 20 lbs
land the same

B1M3600

Port Between 3810
 on random
 4000 Let temporary port
 48,50 Brook 200 lbs 8
 80,00 Intersected & then
 at a corner
 land the same

Port Between 3810
 40,00 Establish you an
 corner from
 which a

Brook 24 or 84 M3.

So 18 or 37 E 30

80,00 In corner

B1M3600

North Between 384

1200 Brook 24 In 8

4000 Let hay mill
 port from a

Brook 10 or 3 M39

Mash 10 or 3 M33

64,00 ~~Brook~~ ^{Salt Creek} 200 lbs 8

81.00 Salt Creek 300 lbs 8 W

86.44 Intersected A boundary

112 lbs west of port -

let port corner to Sec.

344 from which a

Sugar 24 or 25 E 1/2

Brook 7 S 33 E 10

April 4th 1814

(34)

BIMJ 60

North Between 32833

4000 Set hay mule

post from

Sugarwood 800 ft

E 1/4 Sec 12

S 1/2 E 12

8000 Set post corner

of Sec 3233 28829

from a Oak 12

N 58.6 31 ft. S 10

S 38 M 31 links

Land Nolen Farm

ash Oak poplar

& Hickory

(35)

BIMJ 60

East Between 28833 on

random

4000 Set temporary post

7770 Brook 18 ft South

8064 Intersected by S

line at section

corner land the

same

West Between 28833

4002 Set post at aver

age distance for

year corner

from a Sugarwood

to 4 E 6 S 8 1/2

227 ft

8064 Sec corner

(36)

Rim Sea

Worth Between 28 & 29

4000 ft high

at high water

from the sea

12 15 M 49 lbs

from 11 south 27

8000 ft high

at 28 29 20821

from a bird 12

at 27 M 14 M oak

20 27 25 lbs

Land Rotten Iron

Hopton Oak ash

Heckoy underground

Shine

(37)

Rim Sea

Worth Between 21 & 28

on random

4000 ft high

4500 Brook 24 Sea

80, 14 Interventions & shine

at sea corner

Land the same

Worth Between 21 & 28

4007 ft high at average

distance from a

road 6000

6 15 Sea Sea 2066

80, 14 sea corner

Between 16920

Worth Between 24820

4000 Set hay mile

Worth from a

Moah 20 M 52 M

8 M 49 M 200

66 3 M

40,50 Brush 26 M 1/2

8000 Set part corner

open 2021 M 31

from a Sugar

Worth 39 M Sugar

4 M 49 M 3 M

and the same

Between 16921

Worth Between 16921

on corner

40,00 Set hay post

30,00 Intersected by 8 line

8 links worth of an

corner and the

same

Worth Between 16927 on

true line

4000 Set post at average

portion on true

line for 1/4 M corner

from which a

Sugar 6 580 M 24

M Oak 10. 0 M 2 1/4

3000 Set corner

B 16 96 08

North Between Sec 16 & 17
4000 Set half mile
post from corner M. D.
4000 NE 41th Highway
1600 28856 lbs
3000 Set post corner of
Sec 16 17 8 & 9 from
a Dogwood 4000
22611 lb Dogwood
6313 M 30 lb
Land the same

B 17 96 08

East Between Sec 9 & 16
on road
4000 Set Lemhoy post
5000 Brook 12 lbs & 1/2
80,18 Intersected with line
at Sec corner
Land the same

West Between 9 & 16
40,09 Set post at aver-
age distance
for Sec corner
from a Red bud
520 M 8 Superfos
5-530 M 6

80,18 Sec corner

(42)

R 1 M 56 U

North Between 899

40,00 Set half mile

Post from a sugar

2018 M 9 the sugar

10 or 10 M 21 the

3000 Set post corner

of line 8, 9, 14 & 5 from

a Birch 6 24587

the Mash 10 or

30 M 11 links

Land the same

(43)

R 1 M 56 U

North Between 429 or

run down

40,00 Set temporary post

53,00 Birch 10 South

80,10 Invented or 95

line at the corner

Land Very Rich

Land the same

North Between 499

40,05 Set post at average

distance for your

corner from a

Birch 6 U 86 8 13

Log wood 6340 M

16 links

80,10 Section corner

B.M. 9608

North Between 495

6,50 Birch 12 lbs D.

4600 Set hay mill

post from a post

12 S 22 E 22 lbs D.

10 or 23 M 12

42.00 Brook 15 S.E.

45.00 a Sycamore 36 in. diam.

84.79

86.50 Intersected the

N. boundary

69 lbs Nut of a

Set post cor. to Sec. 4 & 5

from which

Birch 12

a S 82 W 8 lbs dist.

a S 83 E 50 lbs

dist.

Land this year

very rich

April 6th 1814Corrected March 1st 1823

B.M. 9608

North Between 31932

4000 Set hay mill

Post from a post

a Birch 20 or 29

625 lbs D. 10 25

57 M 25 lbs

6200 Brook 25 lbs

3000 Set post corner

of Sec 31, 32 29 & 30

from a Dogwood

4 or 65 to 17 D. 8 lbs

21 lbs Land Rules

Iron Oak Hickory

and Sugar

B.M. 9645

North Between 495.

6,50 Birch 12 Ins D.

4000 Set hay mill

Post from a

12 S 22 E 22 1/2

10 or 28 M 12

42.00 Brook 15 S E.

45.00

a Sycamore 36 in. diam.

84.79 Intersected the

86.50 N. boundary

69 1/2 M. N. of 2

Set post cor. to Sec. 9, 4 & 5

from which

S 82 W 8 1/2 Ch. dist.

Birch 12 1/2 83 E 50 Ch.

a. — 10, —

dist.

Land this is

very rich

April 6th 1814Corrected March 1st 1823

B.M. 9645

North Between 31932

4000 Set hay mill

Post from a

a Birch 20 or 22

625 1/2 by 2010 ft

57 M 25 Ch.

6200 Brook 25 Ch.

2000 Set North corner

of Sec 31, 32 29 & 30

from a Dogwood

4 or 65 to 17 to 2 or 30 M

21 Ch. Land Between

Twin Oak Hickory

and Dogwood

B1111964

East Between 29932

on sandstone

4000 Set Humphrey post

80,06 Intersected by skin
at an corner base
the same

West Between 29932

4003 Set post at corner
age distance for
your corner
from a point 12
562 ft 8 in the dog
wood & 560 ft 22
links

80,06 in corner -

B1118564

North Between 29930

4000 Set hay mill
post from a

110 ft 12 in 56

25 ft 10 in 10

338 ft 16 in

2000 Set post corner

along 29930 19

820 ft 10 in 10

Oak 18 585 ft 10

Hickory 10 575 ft

16 ft

Land Robin Junior

Oak & Hickory

B 1 M 96 v

Cost Between 20820

4000 on sundries
Set lamp post3000 Intersected vrs
line at same corner
and the same

Mst. Between 20820

4000 Set post for 442
corner from~~between~~ 20820 825
Go 20 vrs 2m 35

8000 section corner

B 1 M 96 v

worth Between 19820

4000 Set hay mill
post from aB 20 20 1 M
30 Wash 50 52

L 10

7150 Brook 18 18 18

8000 Set post corner
of line 19 18 19 820from a red bar
6 12 18 35 18 18
8 vrs 10 1/2 links

and the same

BMP 16 or

East Between 17920
on sundry
150. Branch 12th 12
4000 set less spoonful
80,12 In section
line at section
corner land the
same

North Between in 17920

40,00 set post at average
distances for the
corner from
Hyacy 10 8 1 1/2
19th 20 20 4 3/8
17 links

80,12 In corner

BMP 16 or

North Between in 17920
5,00 Branch 12th
3 1/2
4000 set Ray mile
post from which
Branch 20 1/2 1/2
Branch North 50
set post corner
of in 1790 7,8
from which a
Branch 10 1/2 23 1/2 24
20 10 5 7 5 6 1/4
Land the same

R 110 36 00

East Between 8517 on
ranch

40,00 Set less hay post

80,10 Interspersed or 80 in
12 lbs south of a corner
land the sameWest Between 8517 on
tree line40,05 Set post at average
distance on tree
line for same
corner from a

Aug 18 or 74 M25

M Oak 10 or 73 B34

80,10 In corner

R 110 36 00

North Between 788

40,00 Set hay mill
post from cornerBuck 20 or 9 M20
Dog or 56 M16

40,5 Oak 12 in

Buck

80,00 Set post corner

of 56 788 from

a M Oak 5 or 82 M

8 lbs Poplar 10

or 35 M 32 lbs

Land the same

R 1111 16 W

East Between 8517 on

Vanderburg

40,00 Set lamp post

80,10 In trees cut on 40 line
12 lbs south of a corner
land the sameWest Between 8517 on
tree line40,05 Set post at average
distance on tree
line for the
corner from a
Sug 18 or 14 M 25
W Oak 10 or 13 B 34

80,10 In corner

R 1111 16 W

North Between 758

40,00 Set hay mill

10th from W

Buck 20 or 9 M 29

Log 15 or 16 M 16

40,05 Oak 12 In

Buck

80,00 Set post corner

of line 5 or 788 from

W Oak 10 or 12 M

8 lbs Poplar 10

or 35 M 32 lbs

Land the same

R 1 M 16 08

Cost Between in 588

on sand down

40,000 Set temporary post

5800 for work & worth

30,000 Insensated & 4 skin

12 lbs worth of

corn & land the

same

North Bih ~~was~~ 5 x 8 on tin

40,000 Set post at average

Lynn on this land

for 1/2 in corn

Oak 12 or 5 18 19

Buck 10 or 5 1 M 2

30,000 in corn

April 7th 1814

R 1 M 16 08

Worth Between 58 p

40,000 Set hay mile

post for

Buck 10 or 5 38 11

5 lbs Hickory 12

or 14 M 13 1/2

84,78 Set post on the

or boundary 56

West of in corn

from a Buck 8

322 & 21 lbs D.

10 or 75 M 13 lbs

Land the same

April 7th 1814

B I M I b W

West Between Sep 697

4000 Set half mile

post prima land

8 Dec 80 E 43 lbs B

10 Dec 80 E 10 lbs —

8327 Set post on the N

Boundary 93 lbs

South of S. corner

from a Bush 12

160 E 13 lbs Dog

wood 6 Dec 88

links —

Land the same

B I M I b W

West Between 7548

4000 Set half mile

post from a corner

from 1000 78

or 60 M 20 lbs Dog

wood 6 Dec 85 E 13

4200 Brough 10 South

8250 Set post on the

West boundary

50 lbs South of

S. corner from

a Bush 12 Dec 88

11 Dec 88 E 13 lbs Dog

Land Rich and

Robert Simon

the same —

R. I. M. J. 600

West Between 18519

4000 Set hay mile
post from a
Bench 6523 Mb
Iron wood 5/4
88 links

8250 Set post on the
West boundary
68 Ms south of a
corner from a
Bench 1000 64610
8020 548 Mb 2410
Land the same

R. I. M. J. 600

West Between 19830

~~4000~~ 4000 Oak 20 Indian

4000 Set hay mile
post from a

Hickory 8088 630

Mass 12077 Mb 25

8313 Set post post on

the west boundary

29 Ms south of a

corner from a

Bench 5510 Mb 8 Ms

Bench 5572 88 links

Land the level

Terri Oak & Hickory

60)

21 May 1831

West Between 30931—

5,00 Brook 20 S

40,00 Set hay mile
post from a W

Oak 20 or 55 E 25

~~83~~ 12 S 38 24

83 12 Set post on the
West boundary
54 lbs South by
In corner
from a Dogwood

6 579 E 39 W Oak 12

or 64 E 34 lbs

Land the same

April 8th 1834

B. M. H. L. C. 87

Recorded